




# Covid-19 Communication

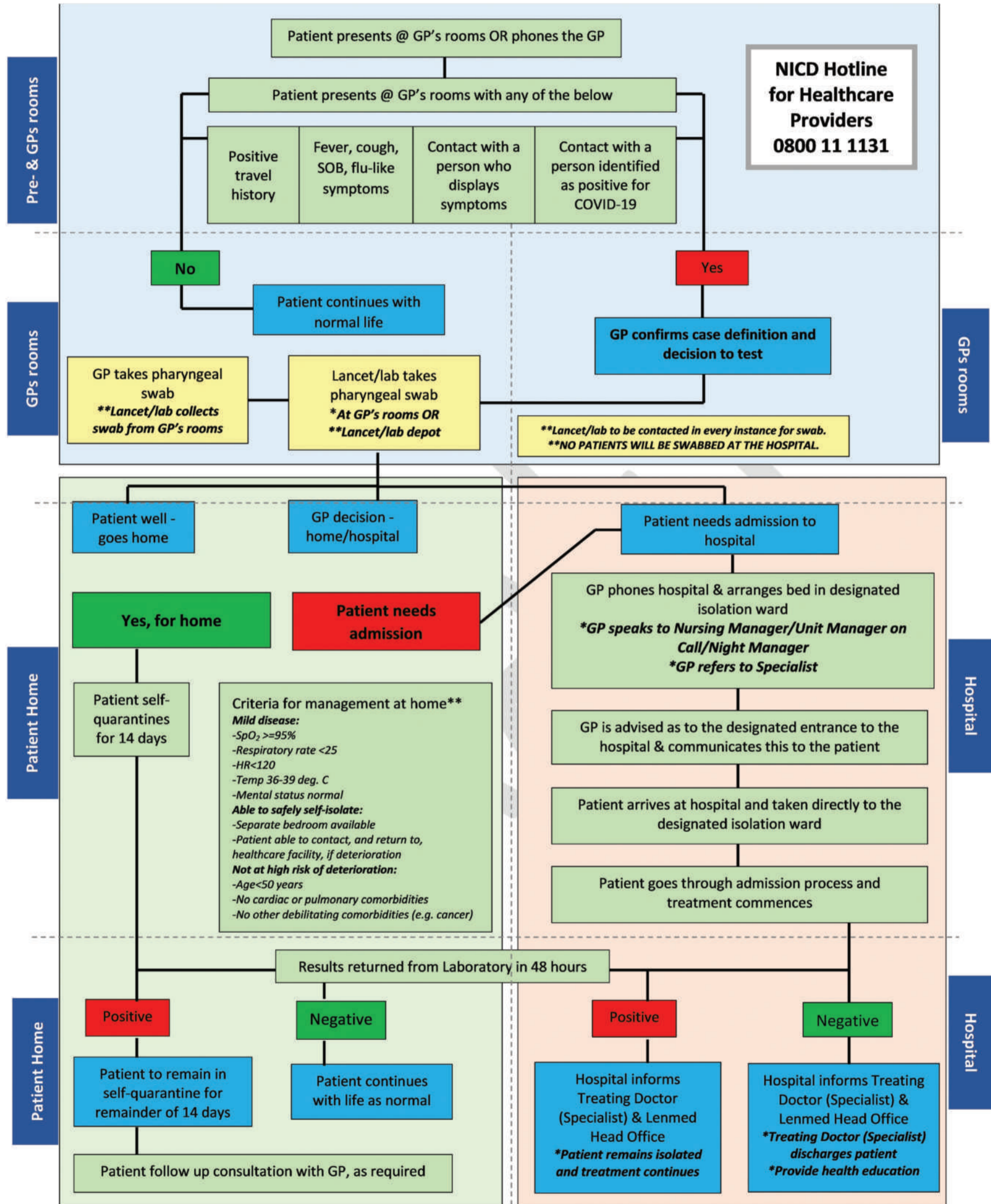
The **safety** of our patients, employees, doctors and community members is our priority. 

Our staff and facilities are **prepared** for the COVID-19 outbreak. 

Our procedures are aligned with the **NICD guidelines**. 

Our facilities and emergency units are **operating as usual**. 

## LENMED COVID-19 PATIENT PATHWAY



\*\*[http://www.nicd.ac.za/wp-content/uploads/2020/03/Clinical\\_management\\_of\\_suspected\\_or\\_acute\\_COVID\\_V1.1\\_13.03.20\\_updated.pdf](http://www.nicd.ac.za/wp-content/uploads/2020/03/Clinical_management_of_suspected_or_acute_COVID_V1.1_13.03.20_updated.pdf)  
The NICD Clinical management of suspected or confirmed COVID-19 disease  
\*\*<http://www.nicd.ac.za/wp-content/uploads/2020/03/A0-nCoV-Poster-V1-PU-Feb-2020-G.pdf>  
The NICD Process Flow for Healthcare Professionals

NICD HOTLINE FOR PUBLIC: 0800 111 132/0800 029 999 | NICD HOTLINE FOR DOCTORS: 0800 111 131